



# KSX Adjustable Dampers

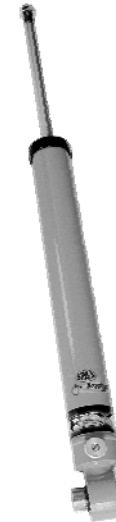
**Bespoke, steel bodied, gas pressurised dampers.  
Available in open lengths from 11" to 24" (280mm to 610m)  
Excellent Value at only £64.99 (+ VAT)**

**Each Damper Individually Hand Built &  
Dyno Tested to ensure  
Quality and Consistent Performance**

**Krypton Gas pressurised for superior low  
speed ride and enhanced high speed  
performance**

**28 STAGE On Car Adjustment of  
BUMP & REBOUND damping force  
for Precise and Fast Adjustments**

**Epoxy Powder Coated  
ensuring Superb Finish and Long Life**



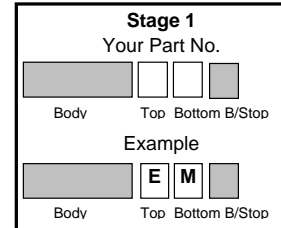
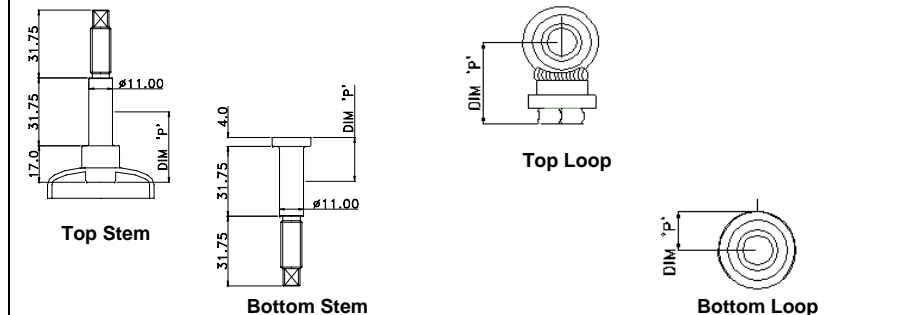
**There are 4 simple stages to designing your own damper.**

## Stage 1

Select the **top and bottom fittings**. The length of these fittings (Dim P) goes towards the overall open and closed lengths.

Part No.	Description	Length	Bore	Dim P incl. Lock Nut	
				Top	Bottom
D	Spherical Bearing	12.0	12.8 (1/2")	30.0	17.5
E	Stem (standard)	See	Drawing	33.0	20.0
F	"Silent block" Bush	28.0	16.0 (5/18")	34.0	21.0
K	Diablo split Bush	-	16.0 (5/18")	30.0	18.0
N	Bush + Sleeve	31.8(1 1/4")	8.0 (5/16")	30.0	18.0
M	Bush + Sleeve	31.8(1 1/4")	9.5 (3/8")	30.0	18.0
P	Bush + Sleeve	31.8(1 1/4")	10.0	30.0	18.0
R	Bush + Sleeve	31.8(1 1/4")	11.2 (7/16)	30.0	18.0
T	Bush + Sleeve	31.8(1 1/4")	12.0	30.0	18.0
V	Bush + Sleeve	31.8(1 1/4")	12.7 (1/2")	30.0	18.0

**Note:** Options D and F are additional cost items at £5 per fixing



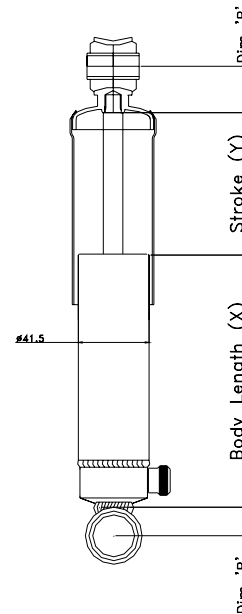


# KSX Adjustable Dampers

## Stage 2

Select the **body length** you require.

Part No.	Dim (X)	Stroke(Y)	Open length w/N fixings	Closed length exc. bumpstop
K30	158	75 (3.0")	280 (11")	205 (8")
K35	173	90 (3.5")	310 (12.2")	220 (8.7")
K40	183	100 (4.0")	330 (13")	230 (9.1")
K45	198	115 (4.5")	360 (14.2")	245 (9.6")
K50	208	125 (5.0")	380 (15")	256 (10")
K55	223	140 (5.5")	410 (16.1")	270 (10.6")
K60	233	150 (6.0")	430 (17")	280 (11")
K65	248	165 (6.5")	460 (18.1")	295 (11.6")
K70	263	180 (7.0")	490 (19.3")	310 (12.2")
K75	273	190 (7.5")	510 (20.1")	320 (12.6")
K80	288	205 (8.0")	540 (21.3")	335 (13.2")
K85	298	215 (8.5")	560 (22")	345 (13.6")
K90	313	230 (9.0")	590 (23.2")	360 (14.2")
K95	323	240 (9.5")	610 (24")	370 (14.6")



## Stage 2

Your Part No.

Body Top Bottom B/Stop  
**Example**  
     
 Body Top Bottom B/Stop

## Stage 3

Select the **Bump Stop length** you require.

Part No	Optional Extras
0	No bumpstop required
1	27mm long
2	45mm long
3	60mm long

## Stage 3

Your Part No.

Body Top Bottom B/Stop  
**Example**  
     
 Body Top Bottom B/Stop

You will now have a part number, which you should quote when ordering

Your Part No.

<input type="text"/>	<input type="text"/>	<input type="text"/>	<input type="text"/>
Example <b>K50</b>	<b>E</b>	<b>M</b>	<b>1</b>
Body	Top	Bottom	Bump Stop

This gives a Closed length (at bumpstop contact)  
 $X(\text{Body}) + P(\text{Top fixing}) + P(\text{Bottom Fixing}) - Y(\text{BumpStop})$

This gives an Open length (fully extended) of  
 Closed length + Y(Stroke)



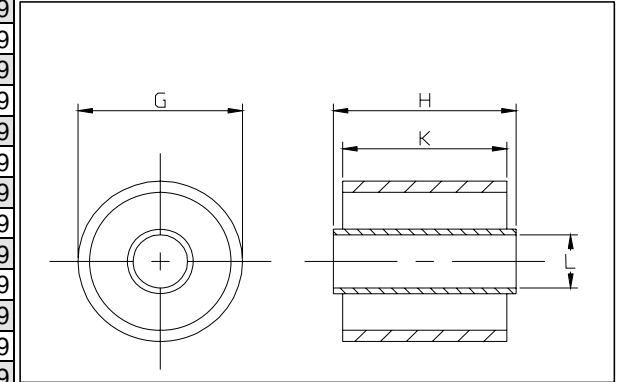
# Accessories

Part No.	"G" Loop Diameter mm	"G" Loop Diameter inches	"H" Overall Length mm	"H" Overall Length inches	"K" Bush Length mm	"K" Bush Length inches	"L" Internal Diameter mm	"L" Internal Diameter inches	Price ea. excl. VAT
----------	----------------------	--------------------------	-----------------------	---------------------------	--------------------	------------------------	--------------------------	------------------------------	---------------------

## Bonded Bushes

0060151	BB10	28.6	1 1/8	25.4	1	23.8	15/16	9.5	3/8	3.99
0060152	BB11	28.6	1 1/8	31.8	1 1/4	28.6	1 1/8	9.5	3/8	3.99
0060153	BB12	28.6	1 1/8	35.0	1 3/8	31.8	1 1/4	9.5	3/8	3.99
0060155	BB14	28.6	1 1/8	31.8	1 1/4	28.6	1 1/8	11.0	7/16	3.99
0060157	BB16	28.6	1 1/8	38.1	1 1/2	31.8	1 1/4	11.0	7/16	3.99
0060159	BB18	28.6	1 1/8	31.8	1 1/4	28.6	1 1/8	12.7	1/2	3.99
0060160	BB19	28.6	1 1/8	38.1	1 1/2	31.8	1 1/4	12.7	1/2	3.99
0060161	BB20	28.6	1 1/8	41.3	1 5/8	38.1	1 1/2	11.0	7/16	3.99
0060162	BB21	28.6	1 1/8	31.8	1 1/4	28.6	1 1/8	10.0	25/64	3.99
0060163	BB22	28.6	1 1/8	31.8	1 1/4	28.6	1 1/8	12.0	15/32	3.99
0060164	BB23	28.6	1 1/8	31.8	1 1/4	28.6	1 1/8	13.0	33/64	3.99
0060215	MB003	31.8	1 1/4	33.5	1 5/16	30.5	1 13/64	12.7	1/2	3.99
0060216	MB004	29.8	1 11/64	30.5	1 13/64	25.4	1	16.0	5/8	3.99

## Bushes & Bearings



## Spherical Bearings

0060037	M110	28.6	1 1/8	9.50	3/8			12.70	1/2	19.99
---------	------	------	-------	------	-----	--	--	-------	-----	-------

## Shortened Anti-Roll Bar Links

Part No.	Applicati mm	Price excl. VAT
SU82BM01	BMW E46 02/98-	349.99
SU82BM01/1	BMW E46 02/98-	349.99
SU82BM02	BMW E46 02/98-	349.99
SU82BM02/1	BMW E46 02/98-	349.99
SU82BM03	BMW E46 02/98-	349.99
SU82BM03/1	BMW E46 02/98-	349.99
SU82BM04	BMW E46 02/98-	379.99
SU82BM04/1	BMW E46 02/98-	379.99
SU82BM04/2	BMW E46 02/98-	379.99
SU82BM05	BMW E46 02/98-	379.99
SU82BM05/1	BMW E46 02/98-	379.99
SUKO001	VAG 08/96-05 ADJUSTABLE	49.99
SUKO002	VX Astra G 02/98-	49.99
SUKO003	BMW E46 02/98-	49.99



## C-Spanners

Part No.		Price ea. excl. VAT
C103	2.25" Lock Rings; RSX	6.49
C102	1.9" Lock Rings	6.49



## Bump Stops

Part No.		Length mm	Length inches	Price ea. excl. VAT
0060042	M41	45	1 3/4	1.99
0060079	M51	27	1 1/16	1.99
0060124	M63A	60	2 3/8	4.99
0060127	M63F	150	6	14.99
0060128	M63G	150	6	14.99
0060129	M63H	150	6	14.99
0060130	M63I	150	6	14.99
TA13823	Loose	45	1.75	3.99
0460146	Loose	60	2.4	7.99

