



STEEL TrakSPAX Double Adjustable Motorsport Dampers

**Steel Bodied, Double Adjustable Competition Dampers.
Available in open lengths from 9" to 19" (226mm to 482m)
Excellent Value at only £199.99 (+VAT)**

**100% Independent On Car Adjustment of
BUMP & REBOUND damping force
for Precise, Repeatable and Fast Adjustments**

**All TrakSPAX Dampers are
FULLY REBUILDABLE & SERVICEABLE
by SPAX Factory Technicians
ensuring Long and Economic Life**

**Large range of End Fittings
for ease and flexibility of fitting**

**Each Damper Individually Hand Built &
Dyno Tested to ensure
Quality and Consistent Performance**



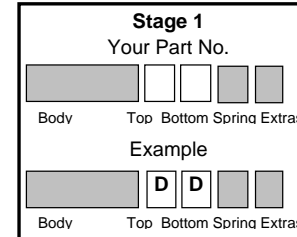
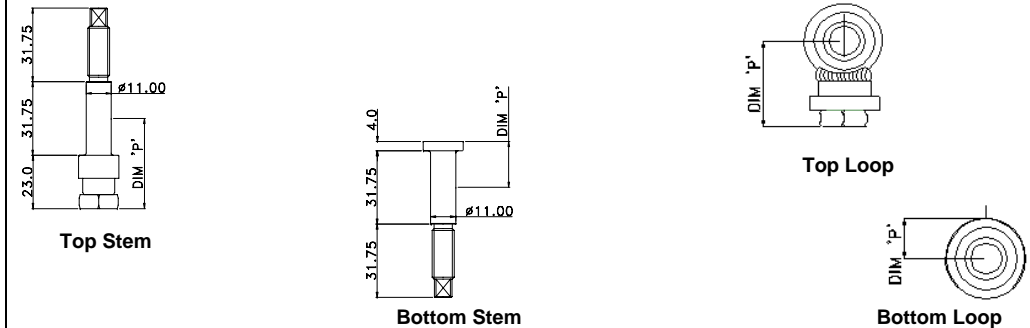
There are 4 simple stages to designing your own damper.

Stage 1
Select the **top and bottom fittings**. The length of these fittings (Dim P) goes towards the overall open and closed lengths.

Part No.	Description	Length	Bore	Dim P	
				incl. Lock Nut Top	Bottom
A	Rubber outer and bonded steel sleeve inner bush	25.4 (1")	9.6 (3/8")	32	14.5
B	Rubber outer and bonded steel sleeve inner bush	31.8 (1.25")	11.2 (7/16")	32	14.5
C	Rubber outer and bonded steel sleeve inner bush	31.8 (1.25")	12.8 (1/2")	32	14.5
D	Spherical Bearing 15mm I.D.	12.0	12.8 (1/2")	36	17.5
E	Stem with Standard grommet bushes	See Drawing	See Drawing	39	20.0
F	Steel inner and outer rubber bonded bush	28.0 (1.1")	16.0 (5/8")	39	21.0

Note: option D comes with top hat spacers and a 1/2" reducer sleeve.

The top hats when fitted make the damper 25.4mm wide and have a pilot hole of 8mm that can be drilled out.



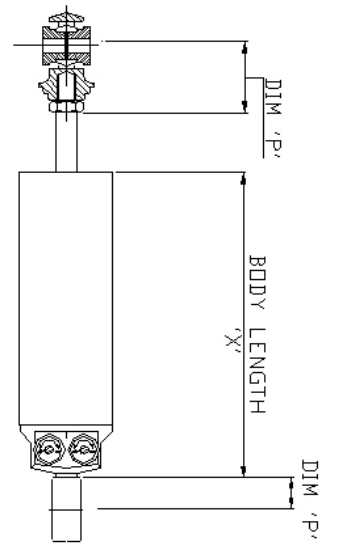


STEEL TrakSPAX Double Adjustable Motorsport Dampers

Stage 2

Select the **body length** you require.

Part No.	Dim (X)	Stroke(Y)	Maximum Spring Length
DAS900	128	48	4.5
DAS950	135	55	5
DAS100	141	61	5.5
DAS105	146	66	6
DAS110	154	71	6.5
DAS115	161	76	7
DAS120	166	86	7.5
DAS125	171	91	8
DAS130	176	96	8.5
DAS135	186	106	9
DAS140	192	111	9.5
DAS145	199	116	10
DAS150	206	126	10.5
DAS160	218	136	11
DAS170	231	151	12.5
DAS180	241	161	13.5
DAS190	256	176	15.5



Stage 2
Your Part No.

Body Top Bottom Spring

Example

DAS120 D D

Body Top Bottom Spring

Stage 3

Select the **Spring Fittings** you require.

Part No	Optional Extras
0	No spring seats and no thread on body
2	Fittings for 2.25" spring
3	Fitting for 61mm spring
4	Fitting for 2.5" spring

Stage 3
Your Part No.

Body Top Bottom Spring Extras

Example

DAS120 D D 1

Body Top Bottom Spring Extras

Stage 4

Select any **Optional Extras** you require.

Each Option is priced at £10.00 (+VAT)

Standard Specification	Part No.	Options List (each)
Fittings for 1.9" or 2.25" I.D. Spring	3	Fitting for 61mm spring
Fittings for 1.9" or 2.25" I.D. Spring	4	Fitting for 2.5" spring
Powder Coated in Silver	B	Powder Coated in Yellow
Powder Coated in Silver	I	Powder Coated in Black
Powder Coated in Silver	J	Powder Coated in Red

Stage 4
Your Part No.

Body Top Bottom Spring

Example

DAS120 D D 1 B

Body Top Bottom Spring

You will now have a part number, which you should quote when ordering

Your Part No. Example

DAS120	D	D	0	B
Body	Top	Bottom	Spring	Extras

This gives a Closed length (metal to metal no bumpstop)
 $X(\text{Body Length}) + P(\text{Top fixing}) + P(\text{Bottom Fixing})$

This gives an Open length (fully extended) of
 Closed length + Y(Stroke)



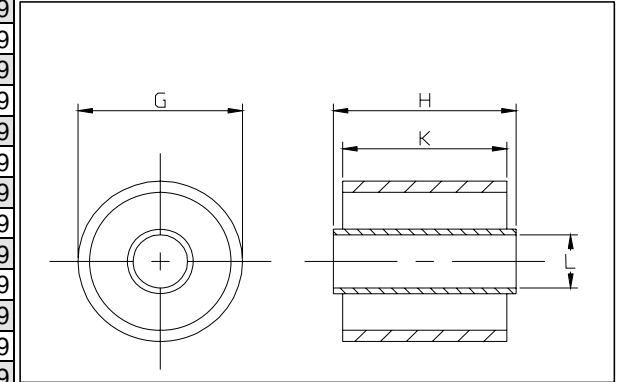
Accessories

Part No.	"G" Loop Diameter mm	"G" Loop Diameter inches	"H" Overall Length mm	"H" Overall Length inches	"K" Bush Length mm	"K" Bush Length inches	"L" Internal Diameter mm	"L" Internal Diameter inches	Price ea. excl. VAT
----------	----------------------------	--------------------------------	-----------------------------	---------------------------------	--------------------------	------------------------------	--------------------------------	------------------------------------	------------------------

Bonded Bushes

0060151	BB10	28.6	1 1/8	25.4	1	23.8	15/16	9.5	3/8	3.99
0060152	BB11	28.6	1 1/8	31.8	1 1/4	28.6	1 1/8	9.5	3/8	3.99
0060153	BB12	28.6	1 1/8	35.0	1 3/8	31.8	1 1/4	9.5	3/8	3.99
0060155	BB14	28.6	1 1/8	31.8	1 1/4	28.6	1 1/8	11.0	7/16	3.99
0060157	BB16	28.6	1 1/8	38.1	1 1/2	31.8	1 1/4	11.0	7/16	3.99
0060159	BB18	28.6	1 1/8	31.8	1 1/4	28.6	1 1/8	12.7	1/2	3.99
0060160	BB19	28.6	1 1/8	38.1	1 1/2	31.8	1 1/4	12.7	1/2	3.99
0060161	BB20	28.6	1 1/8	41.3	1 5/8	38.1	1 1/2	11.0	7/16	3.99
0060162	BB21	28.6	1 1/8	31.8	1 1/4	28.6	1 1/8	10.0	25/64	3.99
0060163	BB22	28.6	1 1/8	31.8	1 1/4	28.6	1 1/8	12.0	15/32	3.99
0060164	BB23	28.6	1 1/8	31.8	1 1/4	28.6	1 1/8	13.0	33/64	3.99
0060215	MB003	31.8	1 1/4	33.5	1 5/16	30.5	1 13/64	12.7	1/2	3.99
0060216	MB004	29.8	1 11/64	30.5	1 13/64	25.4	1	16.0	5/8	3.99

Bushes & Bearings



Spherical Bearings

0060037	M110	28.6	1 1/8	9.50	3/8			12.70	1/2	19.99
---------	------	------	-------	------	-----	--	--	-------	-----	-------

Shortened Anti-Roll Bar Links

Part No.	Applicati	mm	Price excl. VAT
SU82BM01	BMW E46 02/98-		349.99
SU82BM01/1	BMW E46 02/98-		349.99
SU82BM02	BMW E46 02/98-		349.99
SU82BM02/1	BMW E46 02/98-		349.99
SU82BM03	BMW E46 02/98-		349.99
SU82BM03/1	BMW E46 02/98-		349.99
SU82BM04	BMW E46 02/98-		379.99
SU82BM04/1	BMW E46 02/98-		379.99
SU82BM04/2	BMW E46 02/98-		379.99
SU82BM05	BMW E46 02/98-		379.99
SU82BM05/1	BMW E46 02/98-		379.99
SUKO001	VAG 08/96-05 ADJUSTABLE		49.99
SUKO002	VX Astra G 02/98-		49.99
SUKO003	BMW E46 02/98-		49.99



C-Spanners

Part No.		Price ea. excl. VAT
C103	2.25" Lock Rings; RSX	6.49
C102	1.9" Lock Rings	6.49



Bump Stops

Part No.		Length mm	Length inches	Price ea. excl. VAT
0060042	M41	45	1 3/4	1.99
0060079	M51	27	1 1/16	1.99
0060124	M63A	60	2 3/8	4.99
0060127	M63F	150	6	14.99
0060128	M63G	150	6	14.99
0060129	M63H	150	6	14.99
0060130	M63I	150	6	14.99
TA13823	Loose	45	1.75	3.99
0460146	Loose	60	2.4	7.99

