



CSX Competition Dampers

**Bespoke, steel bodied, gas pressurised competition dampers.
Available in open lengths from 9" to 19" (226mm to 482mm)
Excellent Value at only £99.99 (+VAT)**

**Each Damper Individually Hand Built &
Dyno Tested to ensure
Quality and Consistent Performance**

**All CSX Dampers are FULLY REBUILDABLE &
SERVICEABLE by SPAX Factory Technicians
ensuring Long and Economic Life**

**28 STAGE On Car Adjustment of
BUMP & REBOUND damping force for Precise,
Repeatable and Fast Adjustments**

**Extra long height adjuster for
ease and flexibility of fitting**



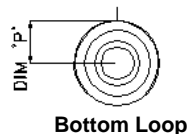
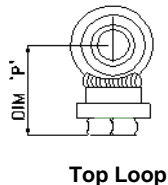
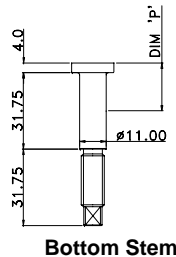
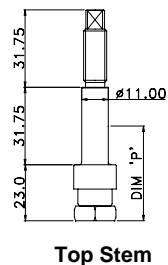
There are 4 simple stages to designing your own damper.

Stage 1

Select the **top and bottom fittings**. The length of these fittings (Dim P) goes towards the overall open and closed lengths.

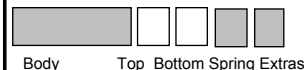
Part No.	Description	Length	Bore	Dim P incl. Lock Nut	
				Top	Bottom
A	Bonded Bush 10	25.40 (1")	9.6 (3/8")	32	14.5
B	Bonded Bush 14	31.75 (1.25")	11.2 (7/16")	32	14.5
C	Bonded Bush 18	31.75 (1.25")	12.8 (1/2")	32	14.5
D	Spherical Bearing	12.00	12.8 (1/2")	36	17.5
E	Stem (standard)	See Drawing	See Drawing	39	20.0
F	"SilentBlock" Bush	28.0 (1.1")	16.0 (5/8")	39	21.0

Note: Option D is fitted with a 15mm internal diameter bearing fitted with a removable 1/2" (12.7) sleeve



Stage 1

Your Part No.



Example





CSX Competition Dampers

Stage 2
Select the **body length** you require.

Part No.	Dim (X)	Stroke(Y)	Dim (C)	Maximum Spring Length
C70/900	131	46	65	4.5
C75/975	143	54	77	5
C75/100	143	64	77	5.5
C80/105	156	64	90	6
C80/110	156	74	90	6.5
C90/115	181	64	95	7
C90/120	181	74	95	7.5
C90/125	181	89	95	8
C90/130	181	99	95	8.5
C100/135	207	89	120	9
C100/140	207	99	120	9.5
C100/145	207	114	120	10
C100/150	207	124	120	10.5
C120/160	258	99	150	11
C120/170	258	124	150	12.5
C120/180	258	149	150	13.5
C120/190	258	174	150	15.5



Stage 2
Your Part No.

Body Top Bottom Spring

Example

C90/120 D D

Body Top Bottom Spring

Stage 3
Select the **Spring Fittings** you require.

Part No	Optional Extras
0	No spring seats required
1	Fittings for a 1.9" inside diameter spring
2	Fittings for a 2.25" inside diameter spring

Stage 3
Your Part No.

Body Top Bottom Spring Extras

Example

C90/120 D D 1

Body Top Bottom Spring Extras

Stage 4
Select any **Optional Extras** you require. Each Option is priced at £10.00 (+VAT)

Standard Specification	Part No.	Options List (each)
Compact 1 5/8" (42mm) diameter steel damper body		
Damper can be mounted up to 45° with adjuster at base	A	Upside down fitment
Powder Coated in Black	B	Powder Coated in Yellow
High Performance Rubber Bump Stop	C	TrakSPAX Spring Aid
Fittings for 1.9" or 2.25" I.D. Spring	D	Fittings for 2 1/2" I.D. Spring
Motorsport Valving with Rebound:Bump Ratio=3:1	E	Rebound:Bump = 1,2,4,5:1

Stage 4
Your Part No.

Body Top Bottom Spring

Example

C90/120 D D 1 BD

Body Top Bottom Spring

You will now have a part number, which you should quote when ordering

Your Part No. Example

C90/120	D	D	1	B D
Body	Top	Bottom	Spring	Extras

This gives a Closed length (metal to metal no bumpstop, X(Body Length) +P(Top fixing)+P(Bottom Fixing)

This gives an Open length (fully extended) of Closed length + Y(Stroke)



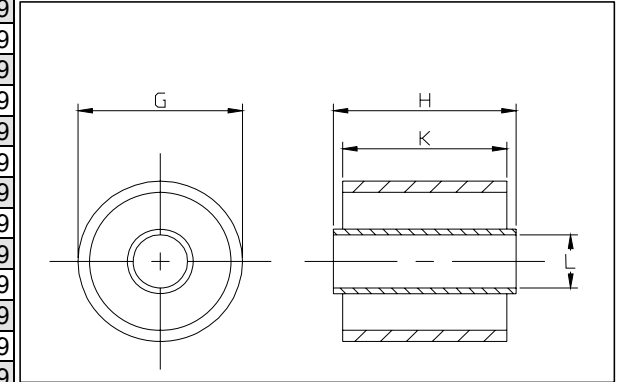
Accessories

Part No.	"G" Loop Diameter mm	"G" Loop Diameter inches	"H" Overall Length mm	"H" Overall Length inches	"K" Bush Length mm	"K" Bush Length inches	"L" Internal Diameter mm	"L" Internal Diameter inches	Price ea. excl. VAT
----------	----------------------	--------------------------	-----------------------	---------------------------	--------------------	------------------------	--------------------------	------------------------------	---------------------

Bonded Bushes

0060151	BB10	28.6	1 1/8	25.4	1	23.8	15/16	9.5	3/8	3.99
0060152	BB11	28.6	1 1/8	31.8	1 1/4	28.6	1 1/8	9.5	3/8	3.99
0060153	BB12	28.6	1 1/8	35.0	1 3/8	31.8	1 1/4	9.5	3/8	3.99
0060155	BB14	28.6	1 1/8	31.8	1 1/4	28.6	1 1/8	11.0	7/16	3.99
0060157	BB16	28.6	1 1/8	38.1	1 1/2	31.8	1 1/4	11.0	7/16	3.99
0060159	BB18	28.6	1 1/8	31.8	1 1/4	28.6	1 1/8	12.7	1/2	3.99
0060160	BB19	28.6	1 1/8	38.1	1 1/2	31.8	1 1/4	12.7	1/2	3.99
0060161	BB20	28.6	1 1/8	41.3	1 5/8	38.1	1 1/2	11.0	7/16	3.99
0060162	BB21	28.6	1 1/8	31.8	1 1/4	28.6	1 1/8	10.0	25/64	3.99
0060163	BB22	28.6	1 1/8	31.8	1 1/4	28.6	1 1/8	12.0	15/32	3.99
0060164	BB23	28.6	1 1/8	31.8	1 1/4	28.6	1 1/8	13.0	33/64	3.99
0060215	MB003	31.8	1 1/4	33.5	1 5/16	30.5	1 13/64	12.7	1/2	3.99
0060216	MB004	29.8	1 11/64	30.5	1 13/64	25.4	1	16.0	5/8	3.99

Bushes & Bearings



Spherical Bearings

0060037	M110	28.6	1 1/8	9.50	3/8			12.70	1/2	19.99
---------	------	------	-------	------	-----	--	--	-------	-----	-------

Shortened Anti-Roll Bar Links

Part No.	Applicati mm	Price excl. VAT
SU82BM01	BMW E46 02/98-	349.99
SU82BM01/1	BMW E46 02/98-	349.99
SU82BM02	BMW E46 02/98-	349.99
SU82BM02/1	BMW E46 02/98-	349.99
SU82BM03	BMW E46 02/98-	349.99
SU82BM03/1	BMW E46 02/98-	349.99
SU82BM04	BMW E46 02/98-	379.99
SU82BM04/1	BMW E46 02/98-	379.99
SU82BM04/2	BMW E46 02/98-	379.99
SU82BM05	BMW E46 02/98-	379.99
SU82BM05/1	BMW E46 02/98-	379.99
SUKO001	VAG 08/96-05 ADJUSTABLE	49.99
SUKO002	VX Astra G 02/98-	49.99
SUKO003	BMW E46 02/98-	49.99



C-Spanners

Part No.		Price ea. excl. VAT
C103	2.25" Lock Rings; RSX	6.49
C102	1.9" Lock Rings	6.49



Bump Stops

Part No.		Length mm	Length inches	Price ea. excl. VAT
0060042	M41	45	1 3/4	1.99
0060079	M51	27	1 1/16	1.99
0060124	M63A	60	2 3/8	4.99
0060127	M63F	150	6	14.99
0060128	M63G	150	6	14.99
0060129	M63H	150	6	14.99
0060130	M63I	150	6	14.99
TA13823	Loose	45	1.75	3.99
0460146	Loose	60	2.4	7.99

